

**McLeod County
Help Me Grow
Early Intervention
Services for
Children Birth to Five**

Infant, Toddler, and Preschool Intervention Services are **Free**

Biscay, Brownton, Glencoe, Lester Prairie, Plato, Silver Lake, & Stewart	320-510-2660
Hutchinson.....	320-234-2619
Winsted	320-286-2129
McLeod County Public Health.....	320-864-3185

What you will find inside:

<i>Help Me Grow</i>	<i>2</i>
<i>Is There Help For Medical Expenses?.....</i>	<i>3</i>
<i>What Can Social Services Provide?</i>	<i>4, 5</i>
<i>What Does Public Health Have To Offer My Family?</i>	<i>6</i>
<i>What Screenings or Assessments Are Available For My Child?.....</i>	<i>7</i>
<i>What If My Child Isn't Doing Things Like Other Children His/Her Age?.....</i>	<i>8</i>
<i>What Mental Health/Counseling Services are available?</i>	<i>9</i>
<i>Is There Help for Chemical Dependency?.....</i>	<i>9</i>
<i>Where Can I Go For Early Childhood Family Education/School Readiness?.....</i>	<i>10</i>
<i>Where Can I Bring My Child For Reading Opportunities/Libraries.....</i>	<i>10</i>
<i>Where Can I Bring My Child For Preschool?</i>	<i>11</i>
<i>What About Other Programs/Resources In The Area?.....</i>	<i>12, 13</i>

No endorsement of service or quality
is being implied or promoted

updated April 2010

Help Me Grow

Infant and Toddler Intervention Services

What resources are available for families with children birth through five?

A young child interagency team works in cooperation with other agencies to assure available services. These services assist families with medical, developmental, behavioral, growth and financial concerns. Services are coordinated by a team which includes public health, social service workers, occupational and physical therapists, speech therapists, hearing and vision consultants, early childhood educators and counseling services. Any child can be screened for these services. For information, contact your local school district, your local physician, public health or the social services center.

Direct Service Numbers:

Public Health:
320-864-3185

Social Services:
320-864-3144
800-247-1756

School Districts:
Biscay, Brownton, Glencoe,
Lester Prairie, Plato,
Silver Lake & Stewart.....320-510-2660
Hutchinson320-234-2619
Winsted..... 320-286-2129

www.co.mcleod.mn.us

For more information on how young children develop,
plus ideas to help your child learn and grow, go to:
www.MNParentsKnow.com



Is There Help For Medical Expenses?

 **MNCare: a state-sponsored health plan for families with dependent children.**
The benefits are available to Minnesota residents who qualify financially. Premium costs will be a sliding fee scale.

For information and applications call 651-297-3862 (metro) or 800-657-3672

 **MN Children with Special Health Needs (MCSHN)**

Information and Referral
Service Coordination
Child Advocacy
Case Consultation and Technical Assistance
Clinic Services

Eligibility: A family with a child who has or is suspected of having a handicapping condition or long term illness, lives in MN and is under 21 years of age.

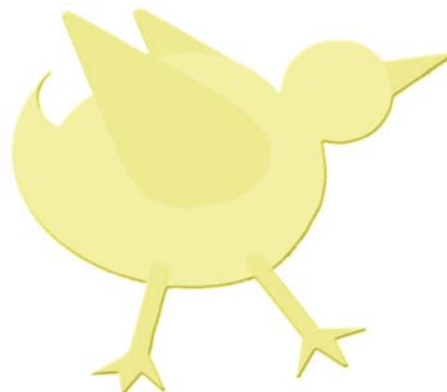
 **Contact:**

Nadine Taylor
MN Children with Special Health
Needs
MN Department of Health
1400 East Lyon Street
Marshall, MN 56258
507-537-7158

or

MN Children with Special Health
Needs
Minnesota Department of Health
85 E 7th Place
PO Box 64882
St Paul MN 55164-0882
800-728-5420

www.health.state.mn.us/mcshn



What Can Social Services Provide?

Financial Services:

- Medical Assistance
- General Assistance
- General Assistance Medical Care
- Food Stamps
- MN Supplemental Assistance
- Child Support Collections
- Aid for Families with Dependent Children
- Application for Children's Health Plan

Other Services:

- Chemical Dependency
- Adoptions
- Mental Health
- Foster Care
- Child Protection
- Day Care Assistance
- Adult Protection
- Services for elderly and disabled

A fee may be assessed depending on the service. Income and family size are considered.

Case Management:

This means identifying a need for a plan, acquiring, coordinating, and monitoring services to individuals with developmental disabilities.

Family Support Grant:

The purpose of this state funding program is to support families in providing the additional services to their child with developmental disabilities. It allows eligible families to receive monthly grant amounts to purchase services or equipment to allow their child to remain at home.

Waivered Services:

The waiver enables families to keep their disabled child at home or to provide him/her with services in the least restrictive environment within the community. It allows Medicaid to cover a variety of services that are not available to other Medicaid participants. The availability of these services depends upon allocations from the state.

Children Home Care Option (TEFRA):

This option allows Medical Assistance eligibility for certified disabled children. They may be eligible for Medical Assistance without regard to parental income and assets.



What Can Social Services Provide? ...continued...

Respite Care:

This service to eligible children provides short-term care from a substitute care giver. Its purpose is to provide families with a break from care as needed.

Counseling and Support Services:

Counseling and supportive services are available for children and families. Services may be received from a number of local providers.

Contact:

McLeod Social Service Center
1805 Ford Avenue, Suite100
Glencoe MN 55336

..... 320-864-3144
..... 320-587-9533
..... 800-247-1756

www.co.mcleod.mn.us



What Does Public Health Have To Offer My Family?

Services Provided:

Home visits for prenatal and newborn assessment, including breastfeeding assistance.
Pre-Admission Screening for waived services or nursing home placement.
Case management visits to coordinate care, obtain equipment/services.

In the school

School Health
Early Childhood Screening

For the family

Women, Infants & Children (WIC) Clinic	Immunizations
Home Visits	Early Intervention
Family Planning Services & Pregnancy Testing	Family Home Visitor
Pregnancy and Childbirth Education	Follow up of Maternal Deaths
Follow up Sudden Infant Death Syndrome	Child Passenger Safety Info
Follow Along Program to assess growth & development	
Resources for families that have children with special needs	
Project Harmony to support those with a history of drug addiction	
Outreach to families for well Child & Teen Checkups (C&TC)	
Personal Care Attendant Assessment	

In the community...

Blood Pressure Screening
Foot care clinics
Teaching
AIDS Resource
Communicable Disease Prevention and Control



Other services

Investigation of public health nuisance complaints
Evaluation of home environments
Information, education and referral regarding environmental health questions and concerns

Contact:

McLeod County Public Health Nursing Service
1805 Ford Avenue North, Suite 200
Glencoe, MN 55336

.....320-864-3185

Residents of McLeod County are eligible for these programs. Fees vary according to services provided.

What Screenings or Assessments Are Available For My Child?

Early Childhood Screening

For all children three or four years old. Screening provided through the school system to check your child's health and development. This must be completed once before a child enters kindergarten.

Contact your local school with any questions:

Glencoe/Silver Lake	320-864-2666
Hutchinson.....	320-587-8908
Lester Prairie	320-395-2521

Early Intervention

Parents may request a comprehensive educational evaluation – **free** to families. For children 0-5 years of age.

Contact:

Biscay, Brownton, Glencoe, Lester Prairie, Plato, Silver Lake, & Stewart	320-510-2660
Hutchinson.....	320-234-2619
Winsted	320-286-2129
McLeod County Public Health	320-864-3185

Child and Teen Checkups

A thorough checkup while your child is well. It includes vision and hearing check, laboratory tests (lead, blood, and urine), immunizations if needed, a complete physical exam, health education and consultation about healthy lifestyles, nutrition and developmental checks, and a time to have questions addressed.

Available for all children ages birth to 21 years.

Medical Assistance and MNCare cover the cost.

Contact:

Your local health provider

Child Developmental Assessments

Wondering about your child's progress and needs? Pediatric assessments are available.

Contact:

Glencoe Regional Health Services Dr. Robert Zajac	320-864-7816
--	--------------



What If My Child Isn't Doing Things Like Other Children His/Her Age?

Occupational/Physical Therapy

Children develop coordination in large and small muscles and learn to perform many tasks. This development occurs at different times for different children. However, sometimes children need special help to develop their motor and sensory skills. Occupational therapists and physical therapists are the specialists to help with motor development.

Contact:

Physical Rehabilitation Center, Hutchinson Area Health Care
1095 Highway 15 S., Hutchinson, MN 55350320-234-4830

Speech and Language Services

Communication is necessary for living. Children learn how to:
say words use their voice understand words make sounds

Even though all children develop these skills at their own rate, some children may need a little extra help. Speech and language services are available.

These services are provided free through public schools, if a child qualifies for special education services. Medical clinics and hospitals also provide these services, if they are prescribed by the child's physician.

Contact:

Speech Therapy, Hutchinson Area Health Care
1095 Highway 15 S, Hutchinson, MN 55350320-234-4740

Early Childhood Special Education

Eligible children are those who are determined to have a special need following testing. Any parent of a child ages birth through five may request an evaluation by contacting the school district.

Services are available without charge to families of children with notable delays in speech and language skills, cognitive skills, motor skills, self-help skills or social/emotional skills. The types of services which are needed by a child and the location where the services will be delivered are determined on a child-by-child basis.

Contact:

Biscay, Brownton, Glencoe,
Lester Prairie, Plato, Silver Lake, & Stewart 320-510-2660
Hutchinson..... 320-234-2619
Winsted 320-286-2129
McLeod County Public Health 320-864-3185



What Mental Health/Counseling Services are available?

Mental Health Services:

Hutchinson Area Health Care
Behavioral Health Services.....320-234-4610
.....800-454-3903

Counseling Services:

Dr. Mark R Smith, PhD320-587-2939
Greater MN Family Resources320-214-9692
Jonas Center320-864-6139
Lighthouse Counseling320-234-2323
Lutheran Social Services888-881-8261
Sheri Vliet320-234-0775

Is There Help for Chemical Dependency?

Inpatient Treatment

New Beginnings at Waverly

A treatment program for adults, 18 and older and an adolescent program for ages 13-17 and 18, if in high school. Chemical dependency evaluations are available. Both programs have aftercare.

109 North Shore Drive, Waverly MN 55390

.....800-487-8758

Outpatient Treatment

Hutchinson Area Health Care

Chemical dependency evaluations are available. Primary outpatient chemical dependency treatment and after care.

Outpatient treatment provided for ages 15 and older.

1095 Highway 15 South, Hutchinson MN 55350

.....320-234-4610

Recovery Resources of Winsted

Chemical dependency evaluations available. Primary outpatient chemical dependency treatment and aftercare.

551 Fourth Street N, PO Box 905, Winsted MN 55395

.....320-485-2323

MN Teen Challenge

Residential drug and alcohol treatment for teens and adults.

.....612-373-3366

Where Can I Go For Early Childhood Family Education/School Readiness?

Programs are available for parents and young children:

Early Childhood Family Education (ECFE)

This program provides parent education as well as parent/child classroom experience. Programs offer speakers, field trips, support groups, home visits, toy and book libraries and special family events.

All families with children ages birth to kindergarten.

Small fee for classes. Financial scholarships available.



School Readiness

The purpose of this program is to provide learning experiences for children which enable them to enter kindergarten with skills and behaviors needed to be successful.

Children must be at least 3 1/2 years old and not yet in kindergarten. Each school district determines its own program and criteria within state guidelines for serving children with the highest need.

Contact:

For Area Early Childhood Family Education and School Readiness Programs:

Glencoe/Silver Lake.....	320-864-2681
Hutchinson ECFE	320-587-8908
Hutchinson School.....	320-587-4470
Lester Prairie	320-395-2909
Winsted/Howard Lake/Waverly.....	320-543-3600

Where Can I Bring My Child For Reading Opportunities/Libraries?

Reading Opportunities/Libraries:

Brownton.....	320-328-5900
Glencoe	320-864-3919
Hutchinson.....	320-587-2368
Winsted.....	320-485-3909

Where Can I Bring My Child For Preschool?

Preschools

Classes for three, four and five year olds. Opportunities for children to play and learn together.

Brownton/Stewart

Noah's Ark 320-328-5325

Glencoe

First Lutheran 320-864-3317

Wee Friends 320-510-1811

St. Pius X..... 320-864-3214

Hutchinson

Little Lambs 320-587-3031

Kid's Depot 320-587-4760

ABC Montessori 320-587-6214

King's Kids..... 320-587-2776

Kid's Inc. 320-234-5437

Noah's Ark..... 320-587-3319

Kidz Junction 320-234-7212

Agape Christian Academy..... 320-587-9443

Children of Grace 320-587-4858

New Discovery Montessori Academy 320-234-6362

Lester Prairie

Little Learners..... 320-395-2909

Winsted/Howard Lake/Waverly

Tiny Trojans..... 320-485-2182 x2161

Community Education 320-543-3600

Silver Lake

Holy Family Catholic School 320-327-2356

Headstart Classroom & Homebased Programs

Preschool education for families countywide. Free for families who meet income eligibility or diagnosed with a special need.

..... 320-235-0850 x604 or 800-992-1710

Tri Valley Migrant Head Start..... 320-864-6635

What About Other Programs/Resources In The Area?

Heartland Community Action Agency

Budget Planning	Rental Assistance
Energy Assistance	Transitional Housing
Head Start Classroom and Home Base	Family Assets for Independence
Home Improvement Financing	Foreclosure Prevention Counseling
Home Weatherization Grants	Crisis Assistance Funds
	Child care resources and referral

Willmar: 200 SW 4th St. PO Box 1359, Willmar, MN 56201
.....320-235-0850 or 800-992-1710

Hutchinson: 218 Main Street S, Suite 108, Hutchinson MN 55350
.....800-829-2132 or 320-587-5244

Glencoe: 2020 Ninth Street, Glencoe MN 55336
.....320-864-6469

McLeod County Family Child Care Providers

Social Services have a listing of family child care providers.

Glencoe.....320-864-3144

Hutchinson320-587-9533

Winsted and Stewart.....800-247-1756

Hutchinson Creative Care Association

Group of licensed childcare providers who keep updated on openings for licensed family daycare homes in McLeod County.

.....320-587-7658

Food Shelf

Two different programs that provide food to families with need.

Glencoe:.....320-864-2088

Hutchinson:320-587-4796

Fare For All

Provides fresh groceries for those willing to pay a small fee and donate 3 hours to community service

.....320-587-8454

Visitation Exchange Center

For parents to have supervised visit with their children and/or monitored exchanges
1065 5th Avenue SE, Hutchinson MN 55350

.....320-587-9740

What About Other Programs/Resources In The Area? ...continued...

ARC - Central Minnesota

Directed to assist individuals and families affected by developmental disabilities.
6112 322nd Street, St Cloud, MN 56303

.....800-775-3196
www.arcminnesota.com **arccentral5@aol.com**

Foundation For Challenged Children


.....320-587-7872

Pacer - Parent Advocacy Coalition For Education Rights

Information for families with special education concerns.
8161 Normandale Blvd, Minneapolis, MN 55437

.....952-838-9000 or 800-537-2237
www.pacer.org

Support Groups

Alcoholics Anonymous	Down's Syndrome	
Grief Support	Multiple Sclerosis	
Sudden Infant Death Syndrome		
Contact Public Health for information	320-864-3185	

Family Support Groups

A Special Time For Special Moms320-587-7112
Parent Connection320-587-8639
MN Kinship Caregivers Association320-251-5081 ext 18
(Caregiving by Extended Families)

U of MN Extension, McLeod County

The Extension Service is available to strengthen families by helping them solve problems and make decisions through the use of education, applied research, and the resources of the University of Minnesota.
840 Century Avenue SW, Hutchinson, MN 55350

.....320-587-0770 or 800-587-0770

Telephone Resources:

Family Planning/STD Hotline..... 800-78-FACTS
Legal Aid 800-622-4011
McLeod County Crisis Helpline 320-587-5502
Resource for Battered Women and Their Children 800-934-0851
(McLeod Alliance for Victims of Domestic Abuse)or 320-234-7933